



<https://oceanservice.noaa.gov/facts/high-tide-flooding.html%20>

Examples of why Highway 80 going out to Tybee Islands floods and low-lying areas throughout Savannah where the coastal waters connect with elevations near 6 NAVD 1988.

**National Ocean Service** National Oceanic and Atmospheric Administration U.S. Department of Commerce

Search **National Ocean Service**

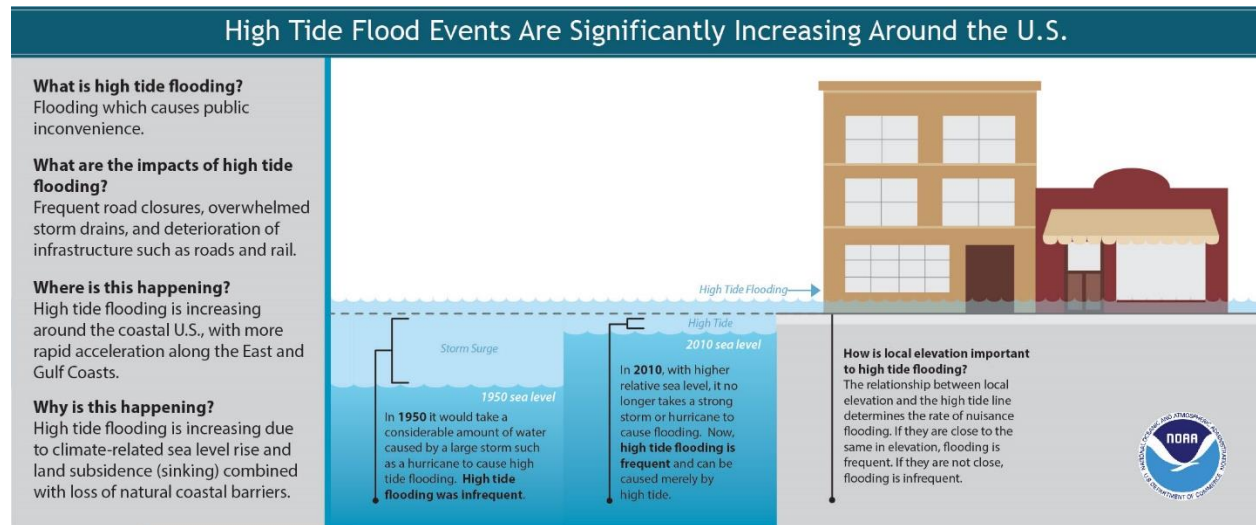
- [Home](#)

1. [Facts](#)

2. What is high tide flooding?

## What is high tide flooding?

High tide flooding—flooding that leads to public inconveniences such as road closures — is **increasingly common as coastal sea levels rise.**



*High tide flooding events have increased around the U.S., but especially off the East Coast.*

To download the image click on: | [Download PDF](#)

As relative sea level increases, it no longer takes a strong storm or a hurricane to cause coastal flooding. Flooding now occurs with high tides in many locations due to climate-related sea level rise, land subsidence, and the loss of natural barriers.

High tide flooding — which causes such public inconveniences as frequent road closures, overwhelmed storm drains and compromised infrastructure — has increased in the U.S. on average by about 50 percent since 20 years ago and 100 percent since 30 years ago.

The effects of rising sea levels along most of the continental U.S. coastline are expected to become more noticeable and much more severe in the coming decades, likely more so than any other climate-change related factor. Any acceleration in sea level rise that is



<https://oceanservice.noaa.gov/facts/high-tide-flooding.html%20>

predicted to occur this century will further intensify high tide flooding impacts over time, and will further reduce the time between flood events.



### Perigean Spring Tide

During a [perigean spring tide](#), those areas that normally experience frequent high tide flooding may see even higher levels of inundation with longer duration. In this image, a perigee moon coincides with high tide to cause coastal flooding conditions at Hains Point, Washington D.C. on September 26, 2015.

In savannah Hwy 80 (road out to Tybee Island, often in under water due to the spring tides.

### More Information

[NOAA High Tide Bulletins](#)

[Q&A With NOAA Scientists](#)

[Center for Operational Oceanographic Products and Services \(CO-OPS\)](#)

[Sea Level Rise and High Tide Flood Frequency Changes around the United States](#)

**Last updated:**

02/26/21

**Author:** NOAA

[How to cite this article](#)

[Contact Us](#) NOAA